



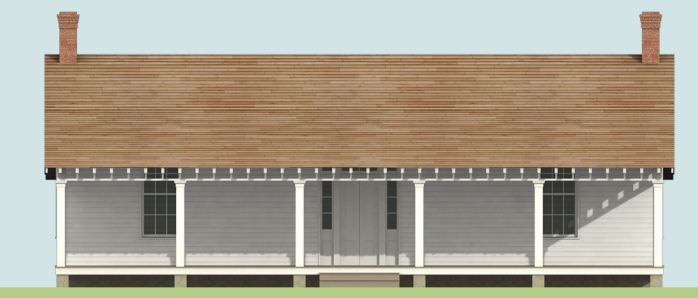
Armfield - Glasgow



Beersheba Springs Hotel



Chalybeate Springhouse
Demolished early 20th century



City Cottage - Nelson - Hopper
Moved and restored circa 2000-2012



Bass - Turner - Summer Rest - Fassnacht
Remodeled substantially circa 1890



Murfree - Merritt - White House

Beersheba Springs, Tennessee, Hotel and Cottages

The original development, 1855 - 1860

Scale: 1/8" = 1' - 0"

Measured, compiled, and digitally reconstructed by Richard Chenoweth Architect. Reconstructions based on measured drawings and/or historical photos. Deed research and aerial photography resources by Ralph Thompson. Original deed holders in blue. Hotel reconstruction based on 1973 HABS drawings by Bill Howell.



Phillips - Hege - Hunerwadel
Burned circa 1911



Harding - Mitchell - Drumright - Papel



Hanner - Bell - Northcut - Tother



Otey - Marr - Argo - Dogwood Hill



Graves - Eve - Stansbury



Garrett - Murfree - Crag Wyld - Lover's Leap
Burned before 1909



Waters - Cagle - Taylor
Burned and rebuilt on same foundation, circa 1955



Pierce - Cagle - Barnes - Bedingfield
Burned 1954



Williams - Freeland - Black - Hemlock Hall



Cockrill (1860) - McGee - Mayhew



Kenner - Ferris - Oertli - Thomas
Remodeled substantially



Dahlgren - Thompson - Nanhaven
Burned 2015



Polk - Swallow's Rest - Howell



Castleman
Burned circa 1955



Cockrill (1858) - Hege - Beersheba Inn
Remodeled substantially circa 1990



Morgan Lodge - Clark - Clark - Parmly - Hill
Burned circa 1933